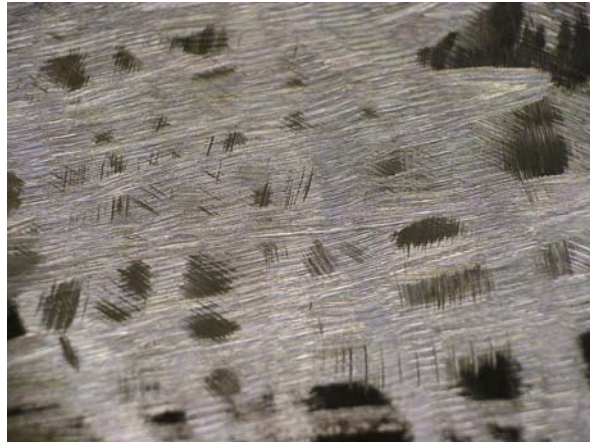


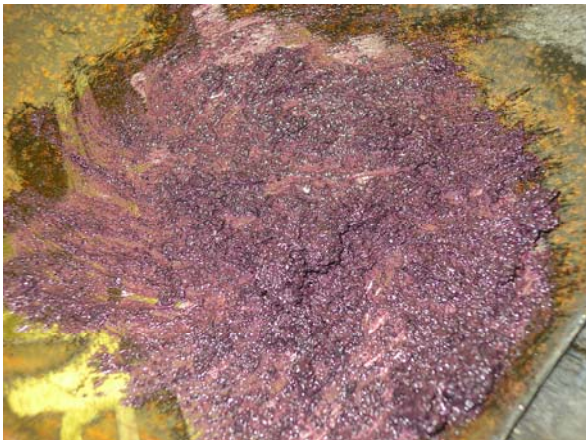
# CTI Silaplate Installation Instructions

To insure the most reliable bond possible, the area to be protected with Silaplate must first be thoroughly cleaned of any grease, oil or rust, Sand blasting is the preferred method but in the case where this is not possible a small 5" grinder will do nicely.



Using the small grinder on its edge, about a 60\* degree angle to the surface works best, Run the grinder back and forth covering every square inch that needs to be coated with Silaplate, then go back over the same area at a 90\* degree angle from the first process giving you a deep cross hatch profile.

Mix the entire contents of one container of hardener with one pail of compound. The mix should be an even homogeneous blend to disperse the hardener throughout. When mixed properly the colour will resemble the pictures below. Please use proportionate amounts for less than a full container of compound. Ie... ½ pail of compound ½ container of hardener.



Once you're ready to apply Silaplate to the prepared area, wearing latex gloves take a small amount of the material you have already mixed for this repair and rub it vigorously into the cross hatch profile, making sure there are no dry spots remaining, once this phase is complete apply tennis ball sized handfuls

on the area, using the palm of your hand, firmly pat the material into the surface and continue adding material to achieve the desired thickness and profile.



Now that the achieved thickness and profile is attained a smooth finish can be produced using clean latex gloves and warm soapy water. Dip your hand into a pail of warm soapy water, and then lightly pat the surface using your palm to produce the finish desired. In tight areas you can use the side of your hand to replicate the results.

Use warm soapy water for clean up